

# PANEL 6X8 2-PACK

## 7 DAY PROGRAM TYPICAL



### STATION SPECIFICATIONS

- OPS2 Panel System
- Monolithic, partial glazed stackers
- 6' x 8' - 2-Pack
- 39", 53", 67" panel height
- Base feed power, 2 REC/station, power down spine
- Clear glass panel mounted screen
- Tackboard
- Paper management trays
- BBF-SP storage pedestal
- FF-SP storage pedestal

### 3D RENDERING

### FINISHES



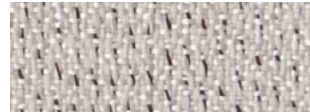
PANEL FABRIC Pebble Creek



SURFACE & EDGE  
Hardrock Maple



PAINT  
MT



ACCENT FABRIC Colonial Downs

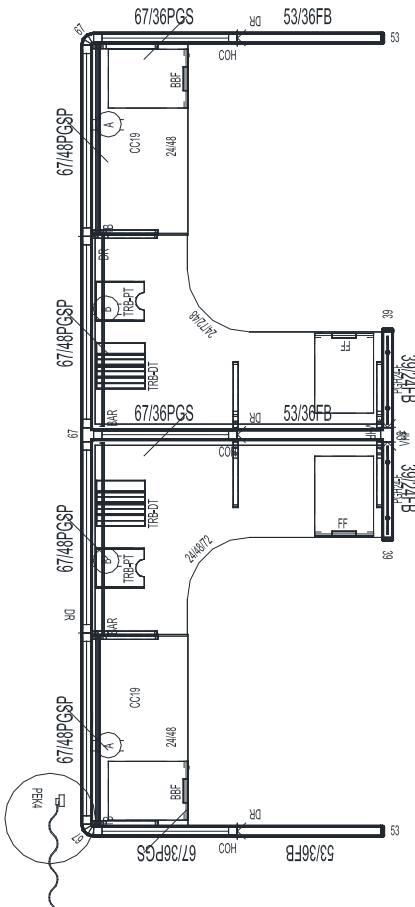
### PRICING

See next page for full BOM.

**\$20,982.00 LIST TOTAL**

**\$10,491.00 PRICE PER STATION**

Typical pricing is for reference only.  
Pricing must be confirmed via official  
Price Book or Customer Service.



### 2D PLAN LAYOUT

# PANEL 6X8 2-PACK

## 7 DAY PROGRAM TYPICAL



### PRICING

Part Number	Part Description	Qty	List	Ext List
BBF-SP	BOX/BOX/FILE PEDESTAL, SQUARE PULL 20"D W/O TOP	2	\$755.00	\$1,510.00
FF-SP	FILE/FILE PEDESTAL SQUARE PULL 20"D W/OUT TOP	2	\$755.00	\$1,510.00
REC/A	A CIRCUIT DUPLEX RECEPTACLES	2	\$47.00	\$94.00
REC/B	B CIRCUIT DUPLEX RECEPTACLES	2	\$47.00	\$94.00
PEK4 (L OR R)	4 CIR. BASE POWER ENTRY KIT	1	\$545.00	\$545.00
F6736	67 X 36 FABRIC PANEL - W/BASE	3	\$815.00	\$2,445.00
F5336	53 X 36 FABRIC PANEL - W/BASE	3	\$719.00	\$2,157.00
TRB48	TOOL RAIL BAR 48"	2	\$135.00	\$270.00
TRBDPT	DIAGONAL PAPER TRAY	2	\$115.00	\$230.00
TRBVPT	VERTICAL PAPER TRAY	2	\$67.00	\$134.00
F6748P	67 X 48 FABRIC PANEL - POWERED	4	\$1,249.00	\$4,996.00
ECWS482472R	48 X 24 X 72 CORNER WORK SURFACE - RIGHT EXTENSION	1	\$1,135.00	\$1,135.00
WS2448	24 X 48 WORK SURFACE	2	\$425.00	\$850.00
F3924	39 X 24 FABRIC PANEL - W/BASE	2	\$505.00	\$1,010.00
PGHM24.G	PANEL MOUNT TEMPERED GLASS SCREEN 14H X 22W	2	\$349.00	\$778.00
TB48B	48" X 16" TACKBOARD- B STYLE	2	\$245.00	\$490.00
ECWS482472L	48 X 24 X 72 CORNER WORK SURFACE - LEFT EXTENSION	1	\$1,135.00	\$1,135.00
EC53A2	53" END CAP	2	\$75.00	\$150.00
EC39A2	39" END CAP	2	\$69.00	\$138.00
3WY67A2	67" - 3 WAY CONNECTOR	1	\$319.00	\$319.00
COH	CHANGE OF HEIGHT FILLER - PANEL TO PANEL	3	\$36.00	\$108.00
PTP48	48" PANEL TO PANEL CONNECTOR	3	\$31.00	\$93.00
2WY67A2	67" - 2 WAY CONNECTOR	2	\$185.00	\$370.00
PTP62	62" PANEL TO PANEL CONNECTOR	2	\$31.00	\$62.00
3WY53A2	53" - 3 WAY CONNECTOR	1	\$289.00	\$289.00
VHF	VARIABLE HEIGHT FILLER - PANEL TO CONNECTOR	2	\$35.00	\$70.00

**\$20,982.00 LIST TOTAL**

**\$10,491.00 PRICE PER STATION**

Typical pricing is for reference only.  
Pricing must be confirmed via official  
Price Book or Customer Service.