

# 8X8 2-PACK

## OPS2 PANEL SYSTEM TYPICAL



**3D RENDERING**

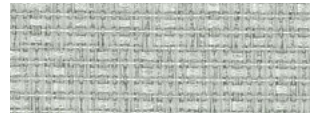
### STATION SPECIFICATIONS

- OPS2 Panel System
- 2-Pack
- Monolithic & Partial glazed stackers
- 39", 53", 67" panel height
- 8' x 8' with Mullions
- 2 flipper door units
- BBF-SP storage pedestal
- FF-SP storage pedestal
- LED task lighting
- Keyboard set
- Tackboards
- Paper management trays
- Pencil drawer
- Fabric panel mounted screens
- Base feed power
- 2 REC/Station
- Power down spine

### FINISHES



**PANEL FABRIC** Reeds Bisque



**ACCENT FABRIC** Sprite Powder



**PAINT & EDGE**  
HF



**SURFACE**  
White Nebula

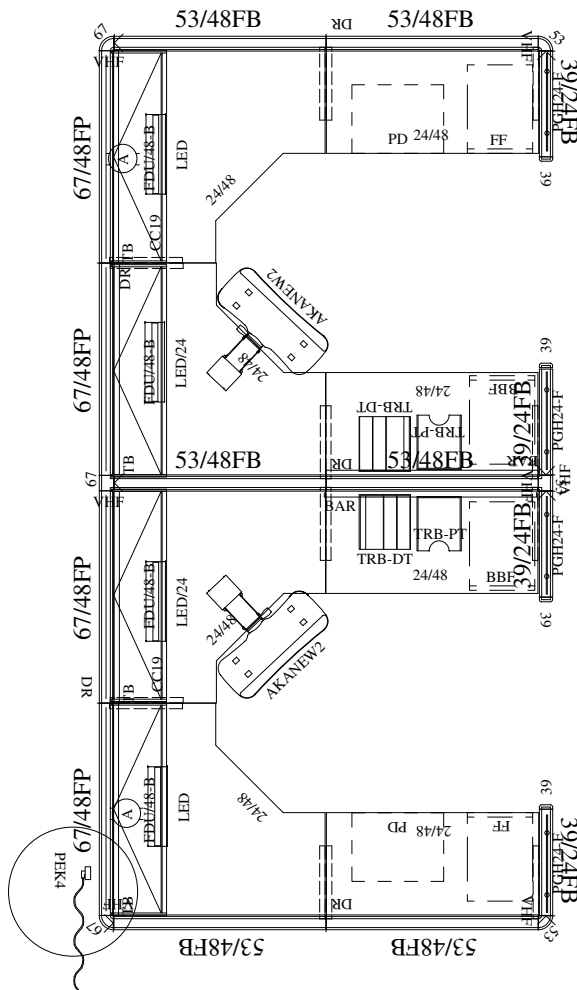
### PRICING

See next page for full BOM.

**\$30,769.00 LIST TOTAL**

**\$15,382.00 PRICE PER STATION**

Typical pricing is for reference only.  
Pricing must be confirmed via official  
Price Book or Customer Service.



**2D PLAN LAYOUT**

# 8X8 2-PACK

## OPS2 PANEL SYSTEM TYPICAL



### PRICING

Part Number	Part Description	Qty	List	Ext List
2WY53A2	53" - 2 WAY CONNECTOR	2	\$165.00	\$330.00
2WY67A2	67" - 2 WAY CONNECTOR	2	\$185.00	\$370.00
3WY53A2	53" - 3 WAY CONNECTOR	1	\$289.00	\$289.00
3WY67A2	67" - 3 WAY CONNECTOR	1	\$319.00	\$319.00
AKAVALUE	Value Keyboard Set- Includes 21" Track Arm & 20" Tray, Wrist Rest & Mouse Tray	2	\$479.00	\$958.00
BBF-SP	BOX/BOX/FILE PEDESTAL, SQUARE PULL 20"D W/O TOP	2	\$755.00	\$1510.00
CWS484824	48 X 48 X 24 CORNER WORK SURFACE	4	\$685.00	\$2740.00
EC39A2	39" END CAP	4	\$69.00	\$276.00
F3924	39 X 24 FABRIC PANEL - W/BASE	4	\$505.00	\$2020.00
F5348	53 X 48 FABRIC PANEL - W/BASE	6	\$829.00	\$4974.00
F6748P	67 X 48 FABRIC PANEL - POWERED	4	\$1249.00	\$4996.00
FDU4812B	48 X 12 FLIPPER DOOR UNIT- B STYLE	4	\$665.00	\$2660.00
FF-SP	FILE/FILE PEDESTAL SQUARE PULL 20"D W/OUT TOP	2	\$755.00	\$1510.00
PDN	PENCIL DRAWER	2	\$115.00	\$230.00
PEK4 (L OR R)	4 CIR. BASE POWER ENTRY KIT	1	\$545.00	\$545.00
PGHM24.F	Panel Mount Fabric Screen 14H x 22W	4	\$349.00	\$1396.00
PTP48	48" PANEL TO PANEL CONNECTOR	3	\$31.00	\$93.00
PTP62	62" PANEL TO PANEL CONNECTOR	2	\$31.00	\$62.00
REC/A	A CIRCUIT DUPLEX RECEPTACLES	2	\$47.00	\$94.00
REC/B	B CIRCUIT DUPLEX RECEPTACLES	2	\$47.00	\$94.00
TB48B	48" X 16" TACKBOARD- B STYLE	4	\$245.00	\$980.00
TLN-LED-36-S	Conn. Cord adjoining 48" & 60" shelves	2	\$19.00	\$38.00
TLN-LED-S-1	LED Task Light w/ Motion Sensor and Power Supply	4	\$425.00	\$1700.00
TRB48	TOOL RAIL BAR 48"	2	\$135.00	\$270.00
TRBDPT	DIAGONAL PAPER TRAY	2	\$115.00	\$230.00
TRBVPT	VERTICAL PAPER TRAY	2	\$67.00	\$134.00
VHF	VARIABLE HEIGHT FILLER - PANEL TO CONNECTOR	7	\$35.00	\$245.00
WS2448	24 X 48 WORK SURFACE	4	\$425.00	\$1700.00

**\$30,769.00 LIST TOTAL**

**\$15,382.00 PRICE PER STATION**

Typical pricing is for reference only.  
Pricing must be confirmed via official  
Price Book or Customer Service.