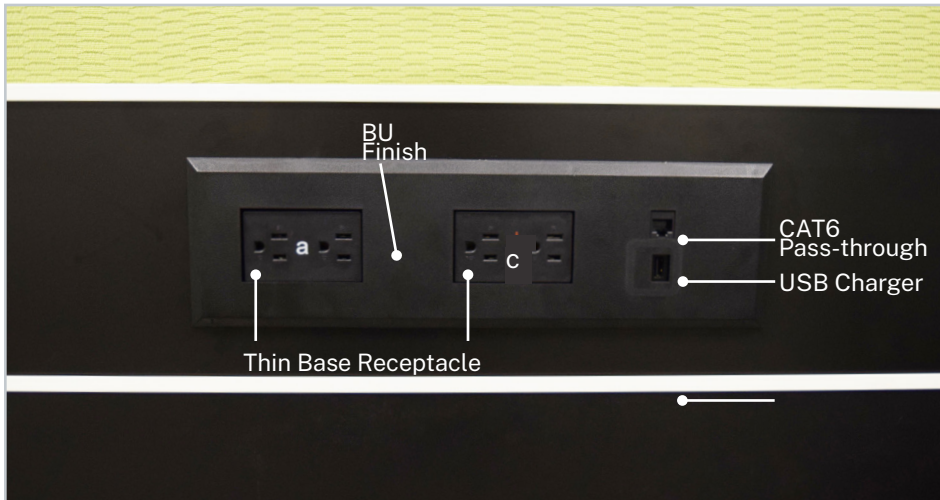


MID POWER TILE



Enjoy the convenience and benefits of 2 receptacles, a USB Charger and a CAT6 pass-through!

Want Mid Power on both sides of the tile panel?

No problem! Access to power comes standard on both sides of the tile panel. When you add mid power, you must use a **7" metal or fabric covered metal tile**.

Only want mid power on one side of the tile panel?

We can do that too! Although access to power comes standard on both sides of the panel, you can use a solid **7" or 14" metal or fabric covered metal tile** to cover the mid power.

Additional Details

SKU: TFP-MPOWER-24.BU



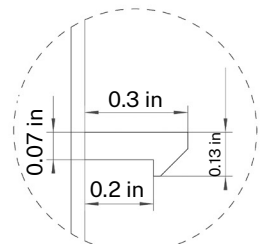
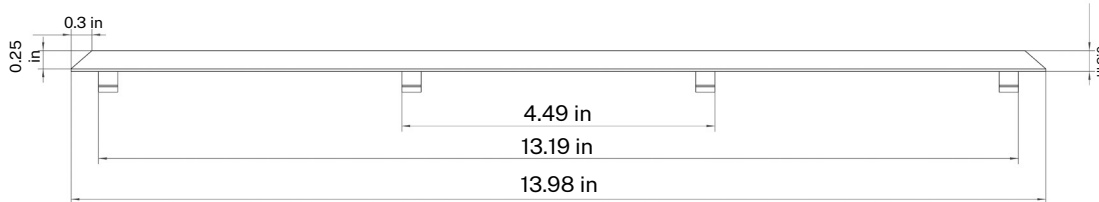
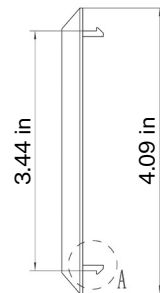
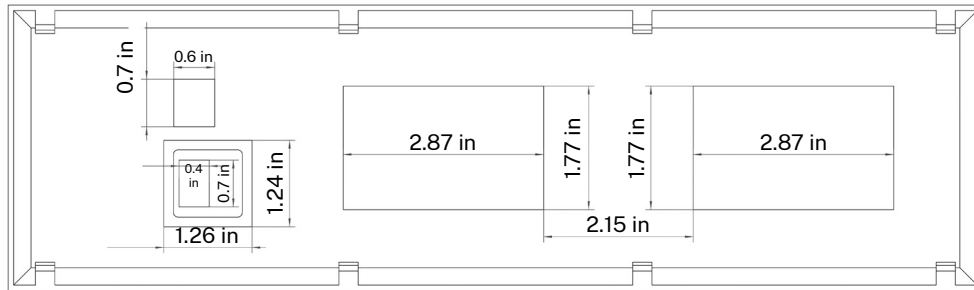
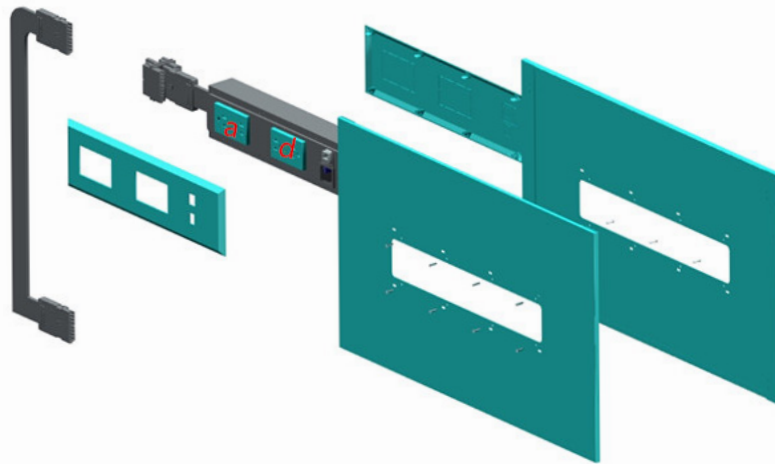
MID POWER FINISH: BU

LIST PRICE: \$699

- Available with metal or fabric covered metal tiles only
- V1 Power only
- Thin Base A and C receptacle outlets are included
- Mid Power must be used on powered tile panels only

For more information, please contact your customer service representative.

MID POWER TILE SPECIFICATIONS



DETAIL A
SCALE 5:1

