

POWERED ADJUSTABLE HEIGHT TABLE: Corner Table

STEP 1

Open and unpack the box containing table base components.



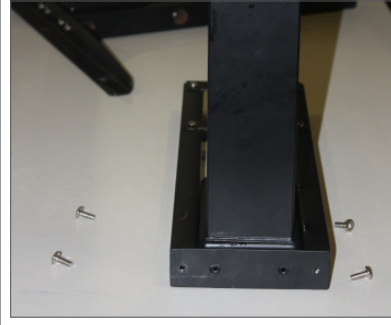
STEP 2

Locate legs and table base top sections.



STEP 3

Attach each leg to a base top section.



STEP 4

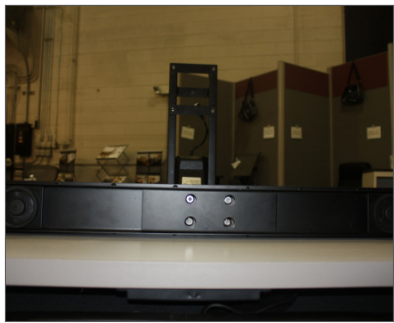
Attach table top support to sides of base.



STEP 5

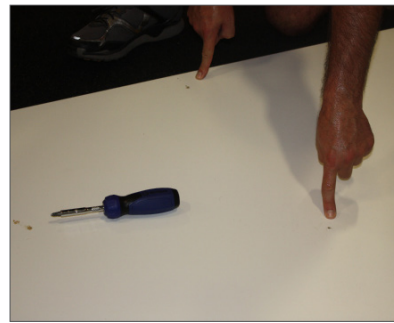
Attach table feet to the bottom of the legs.

Each leg should now have feet installed, table top support installed and attached to a base top section.



STEP 6

Locate pre-drilled holes on underside of top.



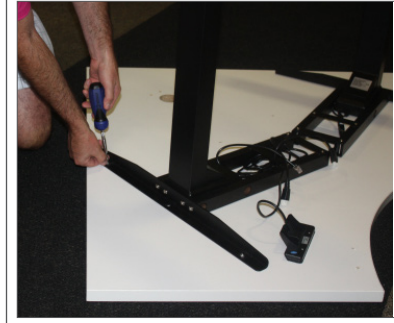
STEP 7

Align base on underside of top, matching the holes to the pre-drilled holes on the top.



STEP 8

Attach the table base to the top.



POWERED ADJUSTABLE HEIGHT TABLE: Corner Table

STEP 9

Align the table control panel with the pre-drilled holes and attach to the table top.



STEP 10

Align control box to pre-drilled holes and install.



STEP 11

Align wire management system to pre-drilled holes and install.



STEP 12

Connect cables to controller box.

Installation is now complete!

