

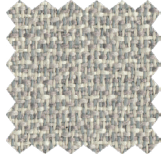
# 7 DAY PROGRAM

Our 7 Day Program offers you a quick turnaround with product produced in 7 business days and shipped in your next standard ship lane. The 7 Day Program offers more finish options over previous quick ship programs, with no panel width restrictions!

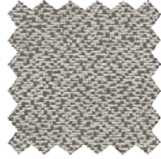
## FABRICS (6)



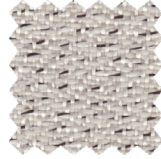
Brown's Island



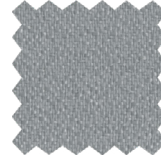
Canal Walk



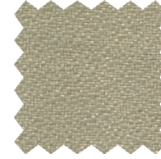
Cinder



Colonial Downs



Grey Sky



Pebble Creek

## WORK SURFACES (4)



Antique White



Folkstone Grey

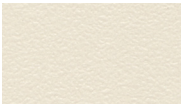


Hardrock Maple  
Work Surface is grained  
(See Note Below)



White Nebula

## EDGE (5)



Antique White



BU



Folkstone Grey



Hardrock Maple



MT

## TRIM & BASE (2)



BU



MT

Colors shown are for representative purposes only. Actual swatches are available upon request. 7 Day Program fabrics are import fabrics and subject to minor imperfections.

## NOTES:

- Includes all fabric & fabric tackable panel heights and widths except for 62" h panels- available in all base styles (B1, B2 and Razor)
- Includes all Grade 1 and Grade 2 Adjustable Height Table Bases in all standard paint colors- tops available in four standard 7 Day surface colors
- Sixty-Five System, XPand System, OPS2 Tile System, Modular Walls, acoustic panels, full and partial glazed panels, fabric overheads, A-Style overheads, open panels and table tops are NOT included in the 7 Day program.
- Grommet cuts are available
- Custom surfaces and Electrical Access cutouts are NOT available
- If a non-7 Day program item is added to the order, the entire order is assigned standard lead times. \$150,000 List Price limit on 7 Day orders.
- Wood Grain: When selecting wood grained surfaces, particularly on corners please refer to the Wood Grain flyer at [www.openplan.com/fabrics-finishes/7-day-program/](http://www.openplan.com/fabrics-finishes/7-day-program/) to see Option 1 and Option 2; as a standard all work surfaces are done in Option.

## TERMS & CONDITIONS:

- Orders are limited to \$150,000 list price or less.
- Orders must be placed by 4:00 p.m. EST; the seven days will start the next business day and ship in the appropriate ship lane. Once order is placed, revisions and cancellations are not applicable. Order will be auto approved.
- Terms: Net 30 days. No deposit required.
- Orders are for office systems only – individual components do not apply to 7 Day Program.